


THE SYLLABUS



Dr. Allen Featherstone welcomes students to the January MAB Campus Session.

 Kansas State University
Department of Agricultural Economics
306 Waters Hall
1603 Old Claflin Place
Manhattan, KS 66506

 mab@ksu.edu

 mab.ksu.edu

 785-532-4495

 **Dr. Allen Featherstone**
Program Director
afeather@ksu.edu

Deborah Kohl
Program Coordinator
dkohl@ksu.edu

Mary Bowen
Communications Coordinator
mjbowen@ksu.edu

 [@ksumab](https://www.facebook.com/ksumab)

 [@ksumab](https://twitter.com/ksumab)

 [@kstatemab](https://www.instagram.com/kstatemab)

What's inside:



Alumni Spotlight

Q&A with Class of 2013's Nanci Daesch, Risk Management Business Partner with Bayer.



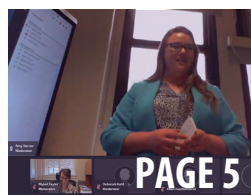
Welcome to the MAB Class of 2023

Read all the current updates on students and alumni.



Student & Alumni

Read all the current updates on students and alumni.



MAB Theses/Calendar of Events

Several students completed their thesis projects during the spring and upcoming events

Alumni Spotlight: Nanci Daesch 2013

Risk Assessments with Bayer. With the Consulting and Risk Assessments there is Business Continuity Management, Audit Comment Remediation, and Large Acquisitions, and Divestitures and Capital Projects.

Mary: Provide an update on the Monsanto acquisition by Bayer and the transition process.

Nanci: The acquisition of Monsanto by Bayer is virtually complete. There are still



enhancements and migrations of systems occurring. The portfolio offering by Bayer Crop Science has a better balance of both Crop Protection & Seed/Trait products. There were many changes occurring over the first several years and COVID accelerated the need to adjust and become more agile.

Mary: What are the current issues your company is facing in the industry right now?

Nanci: COVID impacted many in the value chain from farmers to agriculture suppliers; however, Bayer was able to adjust well to a new way of working. Many employees have not been to their office location in over a year. We learned to work from home and leverage digital technologies to progress on work.

We are adjusting our outlook and portfolio to a new normal relative to customer needs, macro-economics, and sustainability goals. Issues faced by our customer's impact many in the value chain including Bayer. Some of the issues included supply and



My advice for would be to choose a thesis topic that is meaningful and interesting to you. Also, just get started and get something on paper, and adjust as your project takes shape. Finally, to strive for excellence not perfection.

demand - commodity prices, exchange rate volatility, customer liquidity and profitability, and regulatory and other trends. Sustainability is an opportunity for us to work with others to develop climate-smart solutions that enable farmers to adopt and create innovative business models to help tackle climate change. Then also to help growers protect their crops and lessen their environmental impact, so they can produce more with less with an enhanced set of tools and choices. Also to help smallholder farmers in developing regions also get access to tools, technologies and innovative

Daesch continued on next page

Daesch continued from previous page

business models. Finally, to continue to focus on biodiversity and conservation.

Mary: Why did you decide to pursue the MAB program?

Nanci: The MAB program provided an excellent view into other parts of the value chain.

There were individuals with a vast set of experiences relative to agriculture: farmers, ranchers, input providers, equipment manufacturers, insurance specialists, lobbyist, food suppliers. It was interesting to better understand similarities of opportunities and challenges.

Mary: How have you benefited from the MAB program?

Nanci: I developed a network of individuals in the industry, and learned new techniques and approaches to issues.

Mary: Tell me a little about your thesis. Why did you choose your topic? And what did you learn?

Nanci: My thesis covered the skill sets needed for finance departments for a large multi-national company. We utilized it to assess our Finance employee base. From this we decided to increase expertise in key specialty areas like: Accounting, Tax, etc. This highlighted the need to ensure Finance individuals continued to gain a broader understanding of our customers and agriculture.

Mary: What advice do you have for students regarding the thesis?

Nanci: My advice would be to choose a topic that is meaningful and interesting to you. Also, just get started and get something on paper, and adjust as your project takes shape. Finally, to strive for excellence not perfection.

Mary: Do you recommend the MAB program to others?

Nanci: I would recommend this program to others because it provides an opportunity to increase knowledge, networks and collaborations.

WELCOME TO THE CLASS OF 2023

Animal Health Cohort

Guy Allen

Senior Agricultural Economist
International Grains Program
Manhattan, Kansas

Sam Bormann

Companion Animal Global Marketing
Manager
Merck Animal Health
Madison, New Jersey

Tammi Epp

Director of Monogastric Health
Research & Technical Support
Diamond V/Cargill
Ottumwa, Iowa

Kyler Jost

Business Analyst
Merck Animal Health
DeSoto, Kansas

Brian Ostby

Assistant Enterprise Manager
University of Wisconsin-Platteville
Platteville, Wisconsin

Morgan Steele

Quality Assurance
Anchor Ingredients
Fargo, North Dakota

Manhattan Cohort

Cody Barilla

Licensed Real Estate and Chattel
Appraiser
American Ag Credit
Pratt, Kansas

Derek Brown

Chattel Evaluator
American AgCredit
Turlock, California

Ashleigh DiMattina

Manufacturing Specialist
Elanco Animal Health
Lenexa, Kansas

Lindsay Fager

Risk Management Associate
StoneX (INTL FCStone)
Bowling Green, Ohio

2023 continued on page 4





2023 continued from page 3

Kaci Ferch

Agricultural Loan Underwriter
CGB Agri Financial Services, Inc.
Hamlet, Indiana

Lincoln Griffin

Precision Agronomist and Digital
Adoption Specialist
Nutrien Ag Solutions
Waco, Texas

Cole Halbleib

Western Regional Sales Manager
Extron
Prairie Village, Kansas

Cassandra Hartshorn

Herd Manager
Briar Rose Dairy
Humboldt, Nebraska

Robyn Keiter

Quality Assurance
Elanco
Kansas City, Missouri

Charlotte LaFollette

Agriculturalist
Mastronardi BerryWorld
Varieties
Ontario, Canada

Kenny Linkenmeyer

Crop Specialist
New Century FS
Van Horne, Iowa

Erica Lydolph

Senior Loan Officer
Land O'Lakes
Stockport, Iowa

Beth McQuade

Lab Coordinator
Biosecurity Research Institute
Manhattan, Kansas

Mallory Meek

Agriculture and Natural Resources
Agent
Kansas State University Research and
Extension
Lawrence, Kansas

Kaitlin Nicholson

Grower Relations Manager/Purchaser
HarvestPort Exchange
Bakersfield, California

Morgan Nitsch

Sales Agronomist
Crop Service Center, Inc.
Sylvan Grove, Kansas

Emmanuel Oredola

Grain Supply Manager
Bay State Milling
Winona, Minnesota

Collin Page

Field Operations Supervisor
Boundary Bend Olives
Woodland, California

Jodi Roberts

Assistant Plant Manager
Bunge
Muleshoe, Texas

Dallas Schmeidler

Farm Store and Feed Sales
Great Bend Co-op
Great Bend, Kansas

Pete Schwartz

Feed Manager
Schwartz Farms
New Elm, Minnesota

Amber Stutsman

Marketing Director
Eldon C. Stutsman, Inc.
Iowa City, Iowa

Morgan Westover

Dairy Focus Support Associate
Cargill Animal Nutrition and Health
Mason, Michigan

Cortland Worrall

Research Analyst
Syngenta
Lincoln, Nebraska

Campus Sessions in October 2020 and January/March 2021 were a combination of face-to-face and online sessions.



Students and Alumni

Stephen Stevens ('00) retired from American AgCredit in February after 40 years with Farm Credit. He was SVP Chief Appraiser.

Curt Blades ('01), Senior Vice President of Agriculture for the Association of Equipment Manufacturers, in partnership with the American Soybean Association, CropLife America, and National Corn Growers Association announced a study quantifying how widely available precision agriculture technology improves environmental stewardship while providing economic return for farmers.

Christina Mansfield ('01) received the Vermont Bar Association's Pro Bono Service Award. The award recognizes attorneys who provide extraordinary legal services free of charge to indigent and disadvantaged clients in our community.

Steve Young ('01) is now with Farmers Business Network as a Grain Merchandiser.

Ray Smith ('02) was elected to the Ground Water Management District 1 Board of Directors in August 2020. The Kansas Department of Water also established a Water Tech Farm on the family farm.

Matt Craig ('05) is now the Senior Vice President of Sales, Food, Chemicals and Performance Materials at Schenck Process.

Chris Carey ('07) recently accepted a new position with 3M as a Field Service Project Leader located in San Antonio, TX.

Meng Tee ('09) is now a California Sales Representative for Berger, a producer of horticultural growing media.

Abby Dechant Amick ('10) was sworn in as the Wabunsee County Clerk on January 11, 2021.

Josh St. Peters ('10) is now the Executive Vice President of the Illinois Beef Association.

Michael Wisner ('11) is now the Vice President of Grain with the Garden City Coop.

Christy Ball ('12) and her husband, Jacob, welcomed their fourth baby, Ethan Maxwell, in October.

Charles Loubersac D'hotel ('12) is now the Strategic Account Director for Applied Markets at Metabolon.

Natasha (Sadofsky) Sharp ('12) and her husband, Robert, welcomed baby Oakley Marie on September 9th

Brandon Garrett ('13) was promoted to a Regional Business Director for US Pet Care for Zoetis. Brandon and his wife also announced the birth of their third baby, Bodie.

Dana Brooks ('13) was named one of 25 women to receive Pet Age's 2021 Women of Influence Award. The award recognizes the accomplishments and successes of women who have demonstrated exceptional courage, strength and leadership to bring positive change to the pet care community.

Sosthenes Mwansa ('13) started a new position as a Technical Services and Innovation Specialist at ACIDI/VOCA, an economic development organization.

Christopher Hines ('14) is now a Grain Location Manager at CHS Inc.

Mike and Jarah Hauger ('14) announced the birth of their third son, Reed Henry. Jarah also has a new job with Deere in Dealer Development working with Production and Precision Ag.

Jake Maurer ('15) was promoted to Ag Data Analyst for R.D. Offutt Company.

Matthew Chen ('16) is now a Produce Procurement Buyer at Peddler's Son.

Carrie Gregoire ('16) was promoted to Manager of the Vaccine Blending group at Boehringer Ingelheim.

Zach Gregoire ('16) is now a Deviations Investigator at Boehringer Ingelheim.

Jamie Hernandez ('16) is now a General Manager at Farm Nutrients LLC.

Jennifer McDonald ('16) was selected as a member of the 2021 Leadership Kansas class.

Tiffany Ligtenberg ('16) is now the General Manager at The Fresh Green Chile Company in Las Cruces, NM.

Sita Pendurthi ('16) recently wrote and published a book, [Blended Smoothies](#).

Jamie Cooke ('17) was promoted to Director of Procurement for the Northwest Division of CRH.

Julie Nuss Craig ('17) is now a Corporate Trainer at Black Hills Energy in Lincoln, NE.

Adam Tjernagel ('17) was promoted to Senior Director of Global R&D Facilities - North America for Elanco.

Jordan Uthoff ('17) is now working for his family's seed business, Uthoff Hybrids.

Corey Van Otegham ('17) was promoted to Branch Manager at County Bank in Hartwick, IA.

Custan Dye ('18) is now a Procurement Business Partner Associate - S&M at Nestle Purina North America.

John O'Leary ('20) was recently promoted to Plant Manager at ADM.

Tara Leytham ('21) and her husband welcomed their second daughter, Mera Lucille, on February 11.

Ethan Taube ('21) was promoted to Area Lead at Landus in Ames, IA.

Haley Hunt ('22) was promoted to Vice President, Farm Credit Banking Group for CoBank.

Jonathan LaPorte ('22) recently completed work on a new bulletin for beginning farmers on fertilizer planning.

Ashlee Nye ('22) recently started a new position with Zoetis. She was also named Rookie of the Year for 2020 out of all the new Territory Managers.

Benjamin Sims ('22) has started a new role as an Animal Care Technician with Merck Animal Health.

— THESIS DEFENSES —



Cassie (Kniebel) Aherin

Class of 2021

"Grazing Management Plan Adoption in the United States Beef Industry"



Jacob Buehler

Class of 2021

"The Purpose of Effectiveness of Sales Compensation Plans"



Alicia Clark

Class of 2021

"The Merit of Corn Biological Products Used In-Furrow"



Crystal Dau

Class of 2021

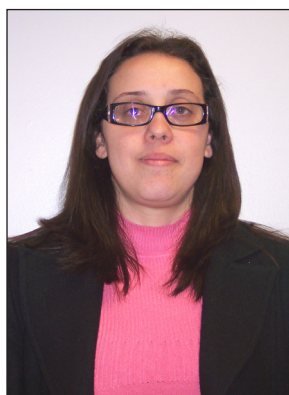
"Conventional Corn Seed Inputs in a GMO World"



Dorothy Herrman

Class of 2021

"A Multivariate Analysis Model to Predict Profitability of a Fresh Cut Vegetable Plant"



Catia Jorge

Class of 2008

"Production of Ethanol from Corn: Is it still a Good Investment in Brazil?"



Megan McWherter

Class of 2021

"Strategic Solutions to Employee Turnover in the Animal Health Industry"



Elle (Wood) Patritti

Class of 2021

"Estimate of the Rural Montana Deposit Market"

Thesis projects can be found at <http://krex.k-state.edu> or by logging into the MAB Community Page on Canvas.

— THESIS DEFENSES —



Rita Ramirez
Class of 2021
"Assessing the Influence of Employee Characteristics on their Perceptions about Retention and Endorsement"



Scott Schadler
Class of 2021
"A Farm's Equipment Optimization of a New Solution through On-Farm Research"



Sara Segovia
Class of 2021
"Creating a Blue Ocean Strategy for a Biostimulants Company"



Ethan Taube
Class of 2021
"An Assessment of Sales Opportunities for a Beef Feed Operation"



Amy Varner
Class of 2020
"Kansas Women in Agriculture"



Xuyan Sunny Zhang
Class of 2021
"Comparison of the Nature Value of Soybean Meal from U.S. and Brazilian Soybeans"

SAVE THE DATE

May 14
Spring Commencement at Bill Snyder Family Stadium in Manhattan, KS

June 5-9
MAB at VMX Expo in Orlando, FL

July 20-22
MAB at NAMA in Kansas City, MO

August 8-12
Animal Health Cohort Campus Session

August 11-13
MAB at NCBA in Nashville, TN

August 13
Defense ballot and final copy of thesis due to be Summer '21 graduate

October 1
Last day to schedule Final Defense for name to appear in commencement program

October 24-28
Animal Health Cohort Campus Session

November 3
MAB at Chicago Section IFT in Chicago, IL

November 5
MAB at AFA in Kansas City, MO

November 12
Defense ballot and final copy of thesis due to be Fall '21 graduate

